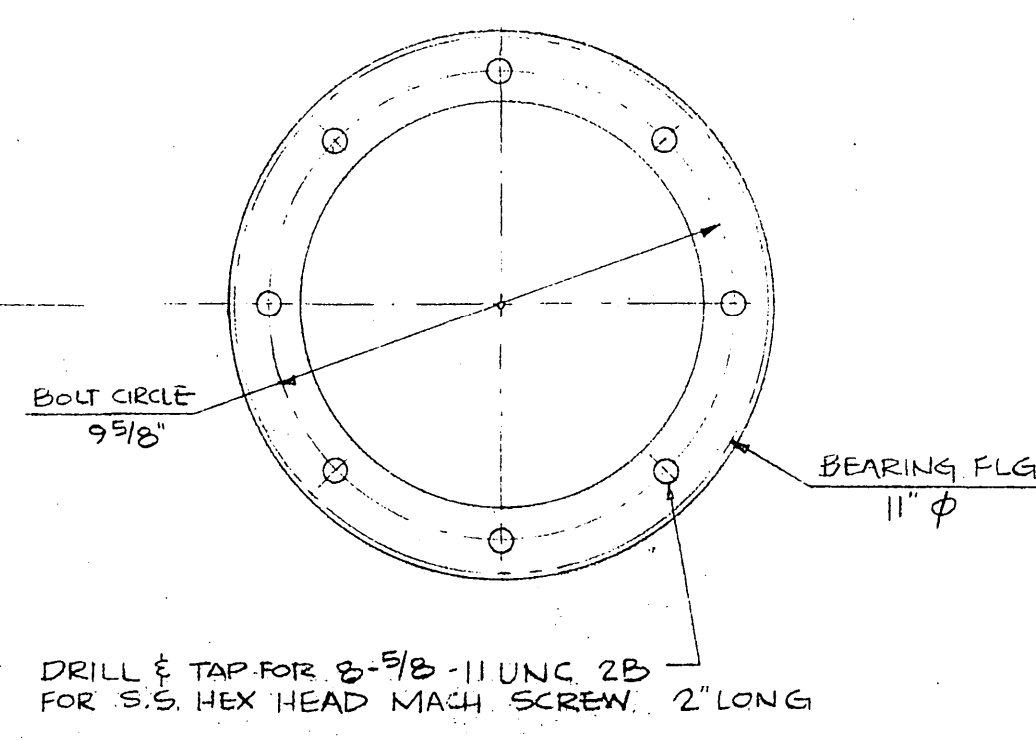
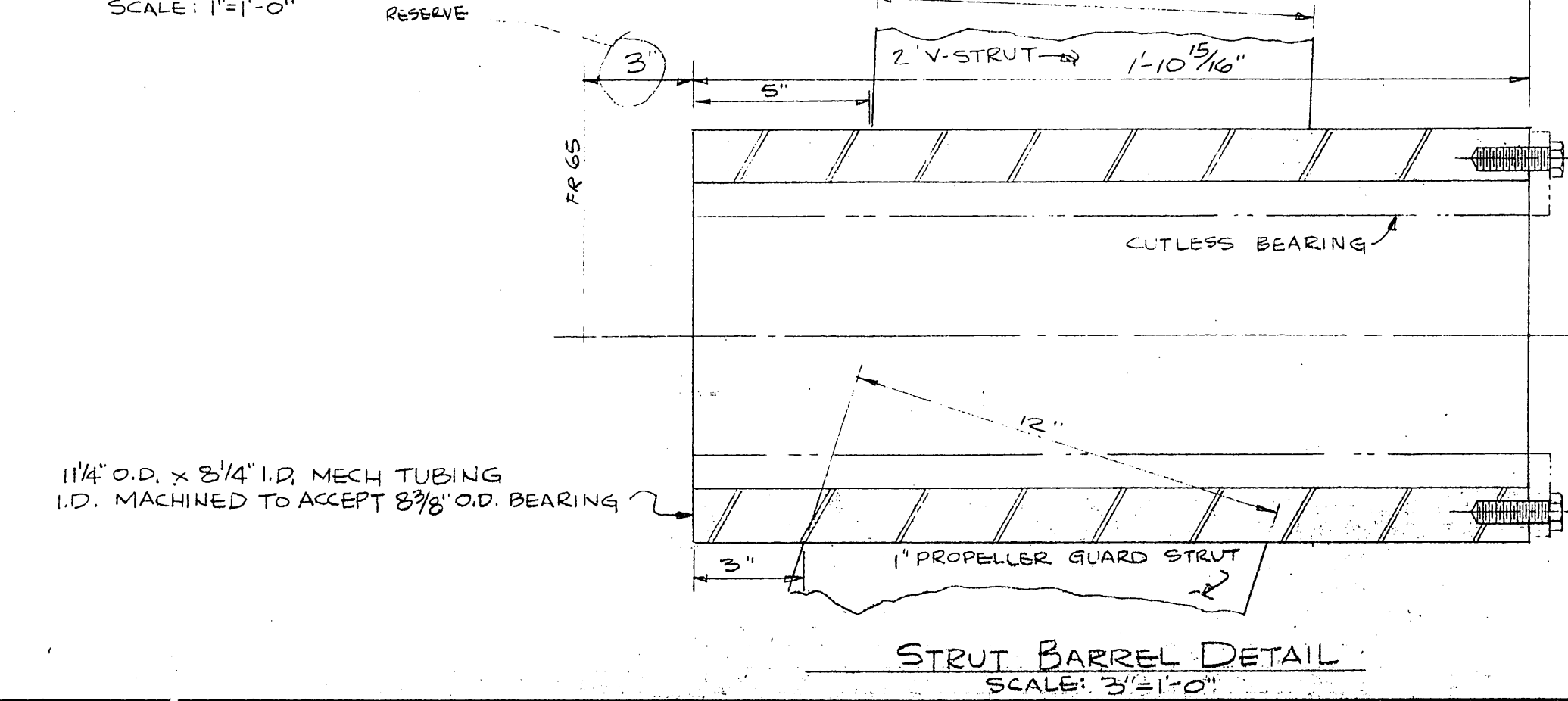
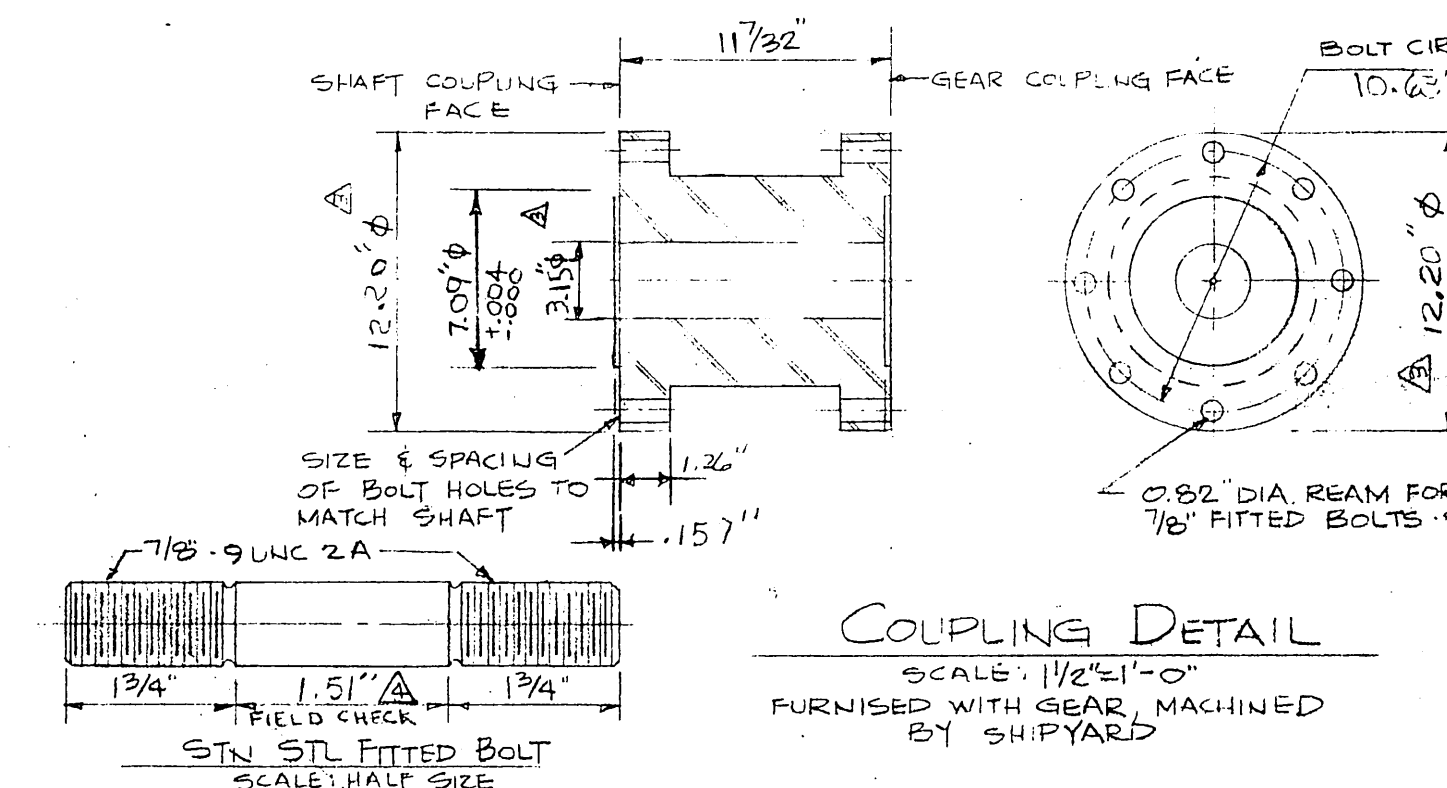
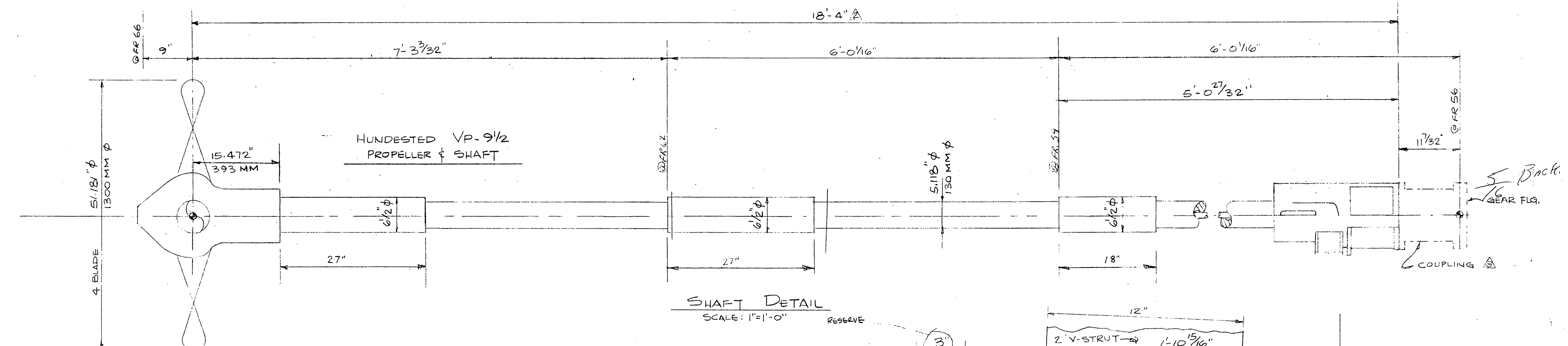
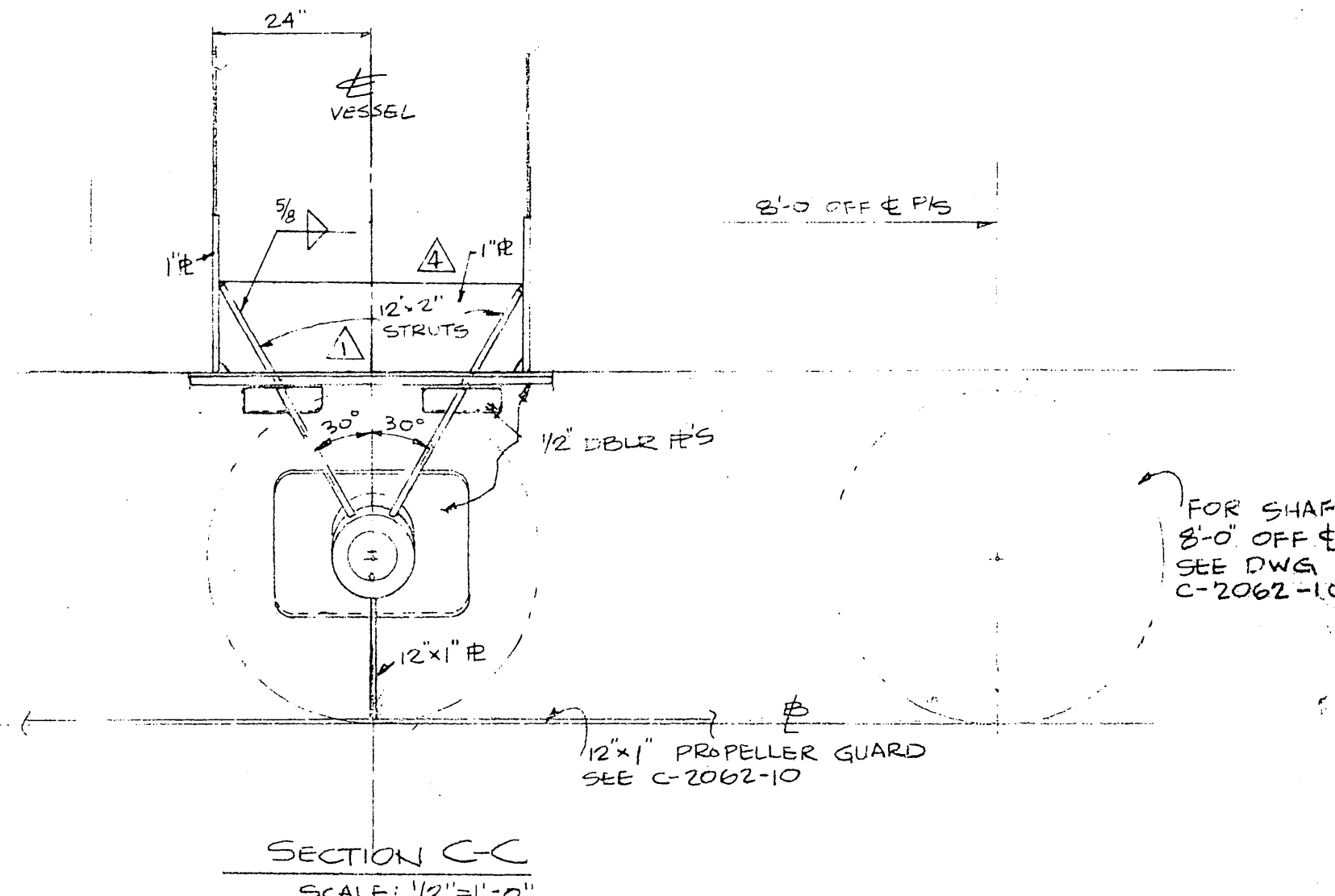
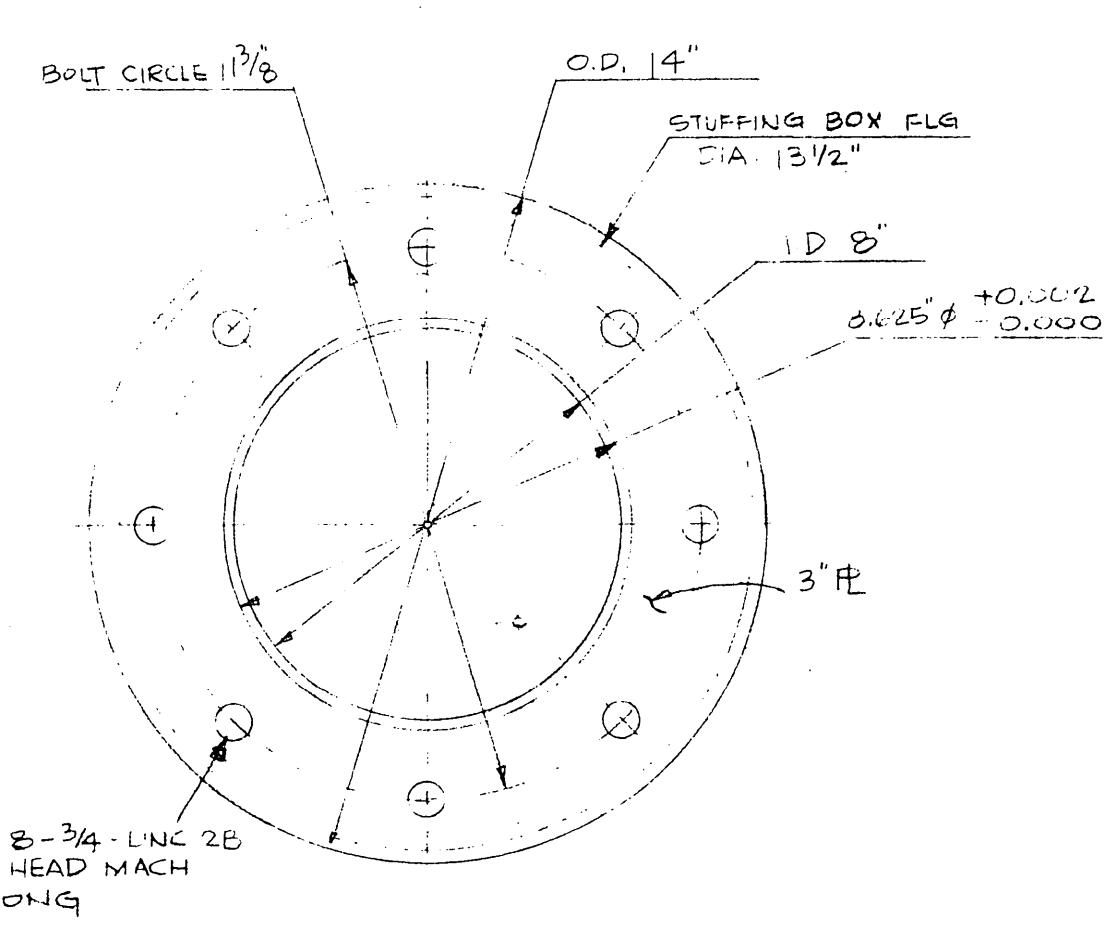
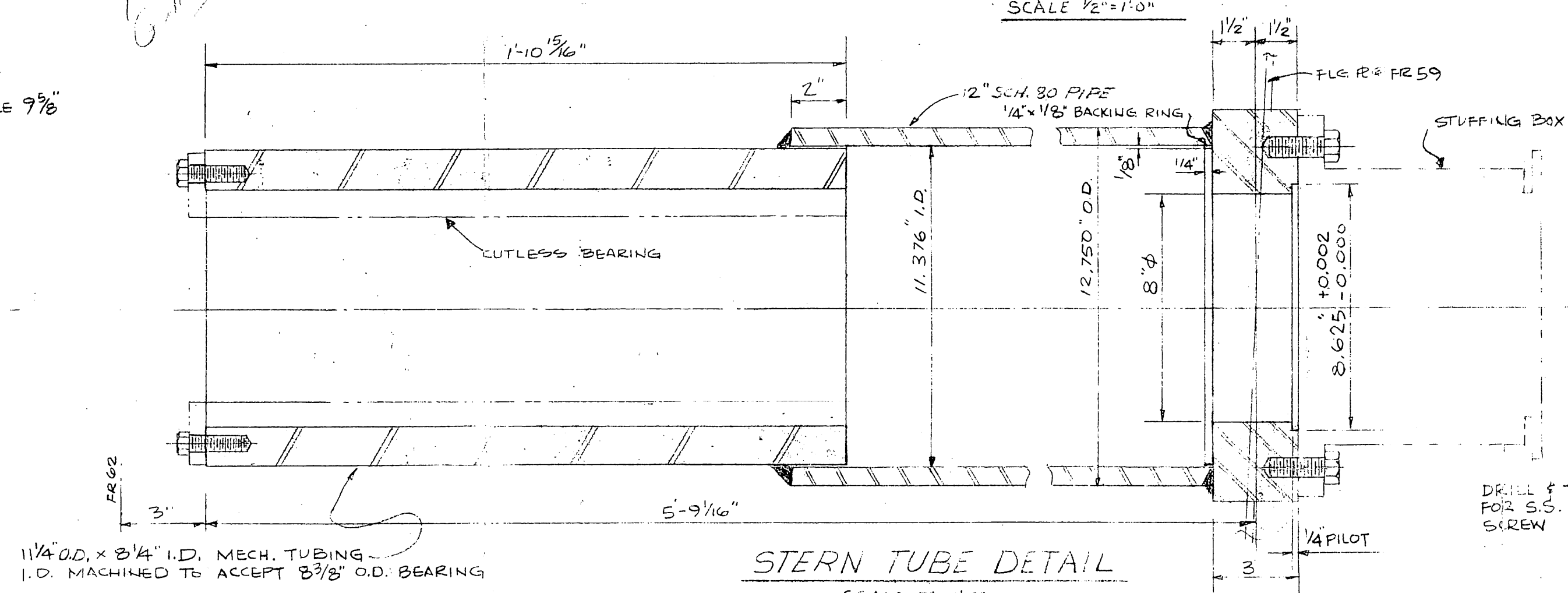
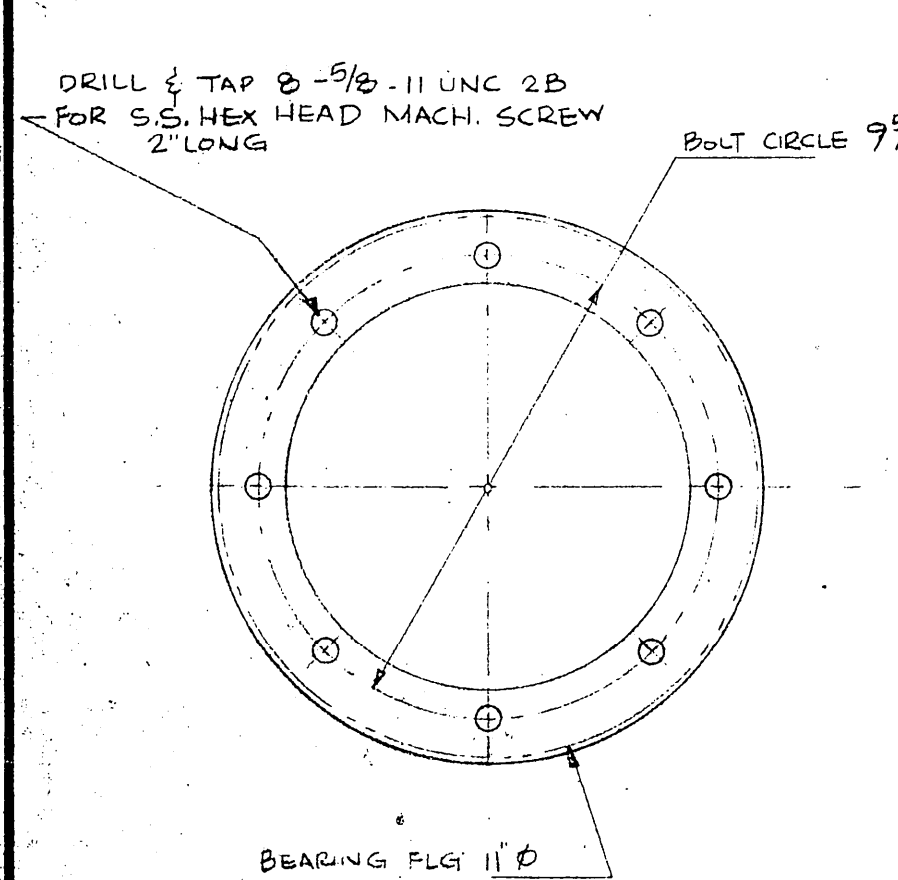
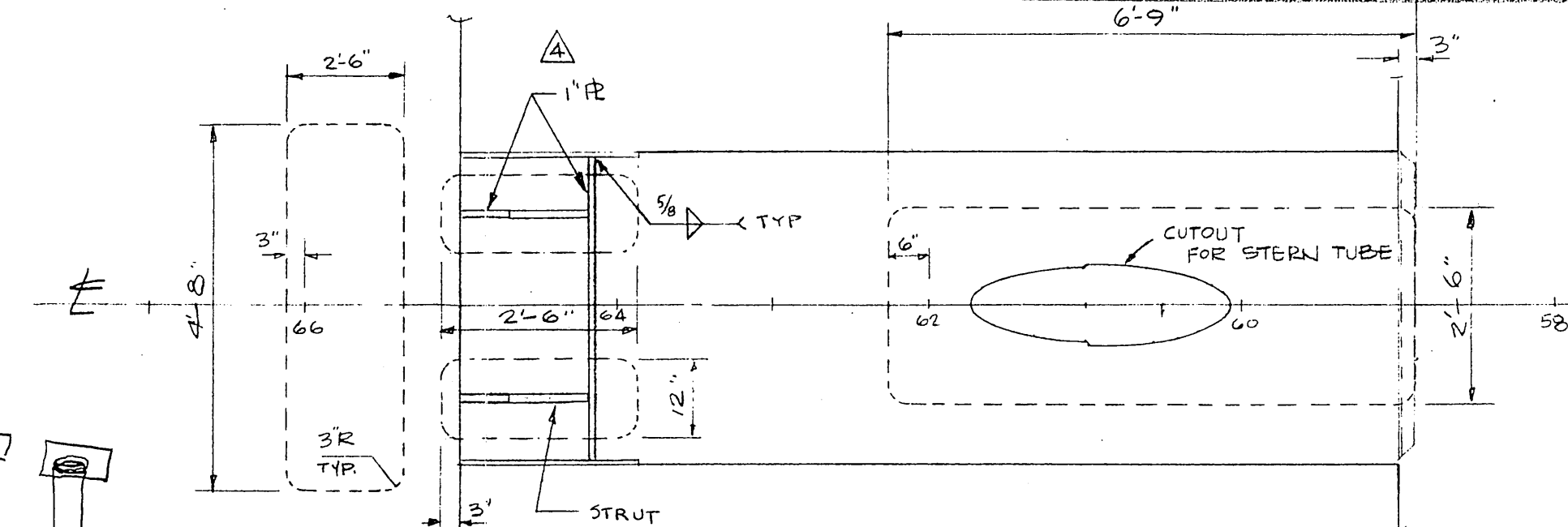
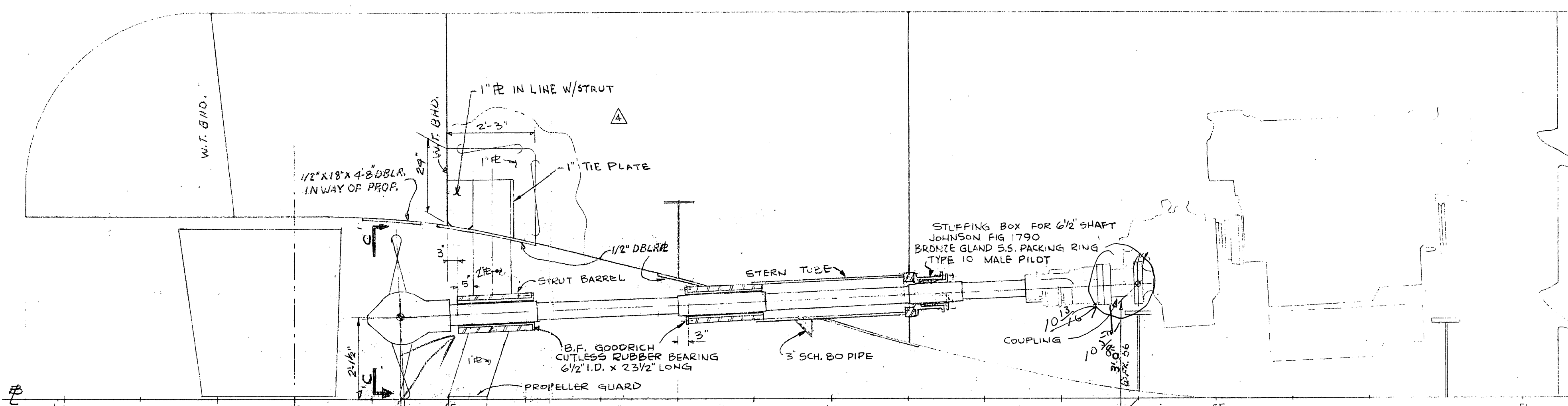


NOTE: ALL MACHINING DIMENSIONS SHALL BE CHECKED AGAINST PRODUCTS OR CERTIFIED DRAWINGS OF THE PRODUCTS INVOLVED

REV. MK	DESCRIPTION	BY	DATE	APPROV.
△	CHANGED STRUT THICKNESS FROM 1"	JC	4/4/81	
△	REV. DWG. PER HUGH L. SMITH MARKED UP PRINTS 9/20/81	W.S.B.	9/29/81	P.C.B.
△	REV. DWG. PER NEW SPEC. SHEET OF REDUCTION GEAR	JT	5/14/81	
△	NOTE ADDED TO COUPLING BOLT. ADDED STRUT SUPPORT STRUCTURE.	WAL-SODW	9/20/81	A.L.S.



Const

MISS. MARINE TOWBOAT CORP. HULL # 90

DESIGN ASSOCIATES, INC.
NAVAL ARCHITECTS MARINE ENGINEERS
NEW ORLEANS, LA.

TIDE WATER MARINE SERVICE

143'X36'X10' SEISMIC VESSEL

SHAFT ARRANGEMENT-CENTER LINE

Drawn: B. Amundson	Date: 4-8-81	Checked:
Traced:	Date:	Checked:
Aprvd:	Date:	Scale: 1/2"=1'-0"
Sheet 1 Of 1	Drawing No. C-2062-12	Revision Mark